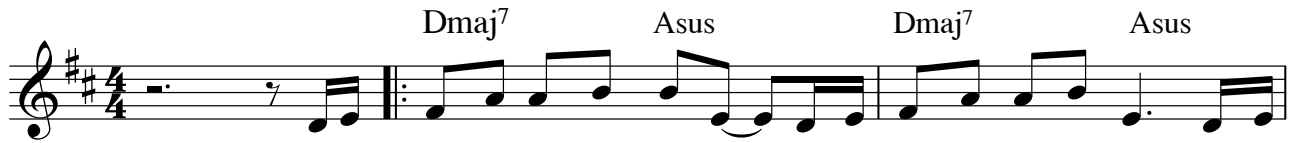
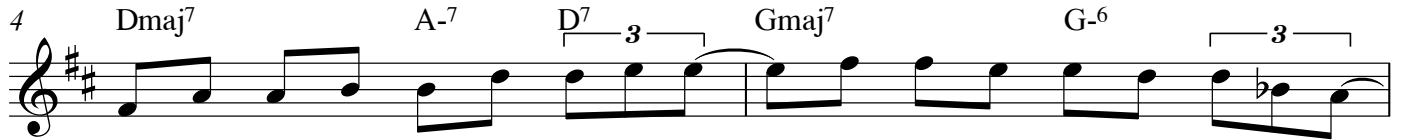


Lost Love

Michael Jefry Stevens (GEMA)



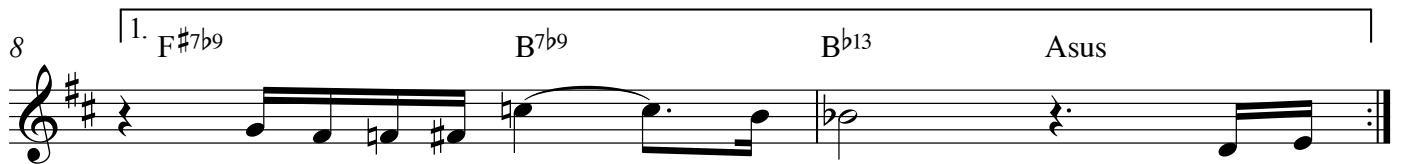
If you ev - er say you're sor - ry it will nev - er ease the pain. For the
ev - er say you love me. Cause I know it can't be true. If I
think that I be - lieved that ev - ery word you said was true. E - ver - y



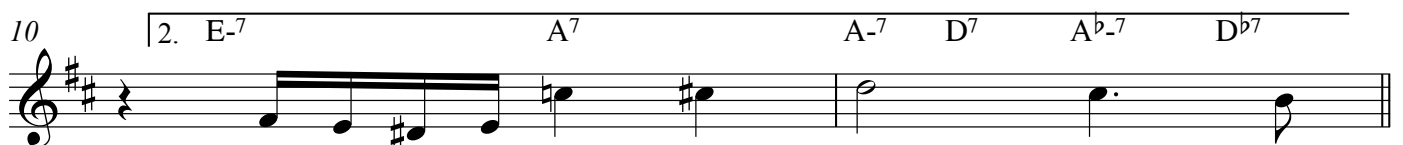
love we had is ov - er and will ne - ver come a gain. Why did you lie
ev - er hear those words a - gain I don't know what I'll do You made me cry -
feel - ing that we shared was that all mean - ing less to you How could I know



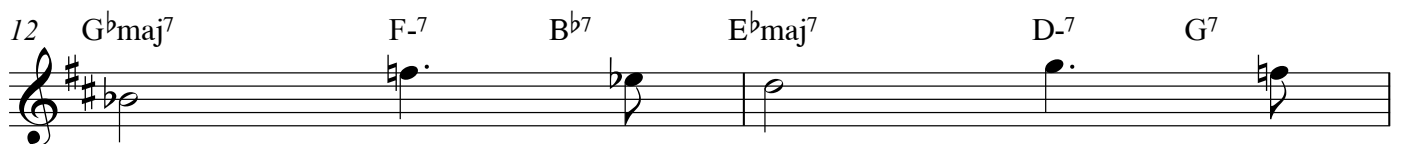
— the night you told me that our love would ne - ver die.
— the day you told me that you wan - ted to be friends.
— your heart was un - ab - le to op - en to my love.



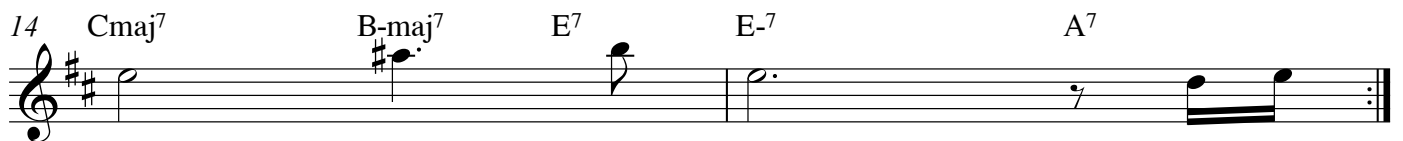
Can you tell me why you're gone? Please don't



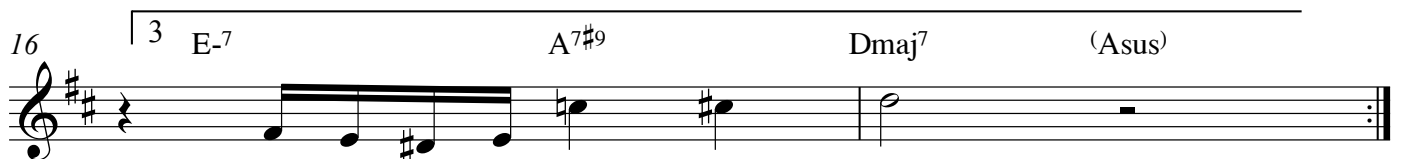
That was when you broke my heart. Now we're



through. Me and you. Some - thing



old. Some - thing new. And to



Bet - ter just to say good - bye.